



Manual Tube Bender HHW-25S

An ideal tool for accurate bending of mild steel tubes up to 180°, Ø10-25mm, wall thickness 0.8-2.0mm.



Characteristics:

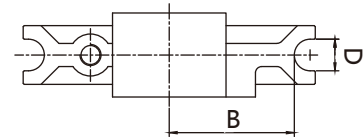
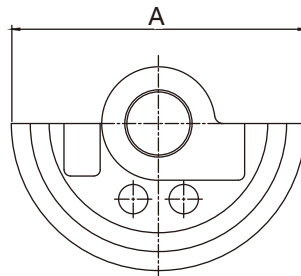
- It is mounted solidly onto the bench and comes with extension handle and 7 x 180° bending shoes included. The bending shoes can be changed in seconds and the small roller is adjustable for pressure by moving the thumb screw inside the main arm.
- All dies are made of steel and nearly unbreakable.
- Comes delivered in a heavy duty moulded plastic carry case with handle.
- Optimum bending results without deformation or ripples.
- Universal applications: U-bends, counter-bends, swan-neck bends and connecting bends possible at all levels.
- Top quality, precise and simple to use.



Sturdy plastic case

Model	Bending range(O.D.) (mm)	Bending shoes inch	G.W. (Kg)	Packing size (cm)
HHW-25S	Ø16-Ø33	3/8"(10mm), 1/2"(12mm), 9/16"(14mm), 5/8"(16mm), 3/4"(19mm), 7/8"(22mm), 1"(25mm)	27.6	67X19X42

Specifications of bending shoes



Bending shoe size (inch)	A (mm)	Minimum bend radius B(mm)	D (mm)	Wall thickness of Standard steel pipe, stainless steel pipe (mm)	Wall thickness of Standard copper tubes (mm)
3/8"	100	42	11	0.8	1.0
1/2"	119	50.5	13	1.0	1.2
9/16"	139	55.5	15	1.0	1.2
5/8"	159	68.5	17	1.0	1.2
3/4"	179	77	20	1.0	1.2
7/8"	225	98.5	23	1.2	1.5
1"	225	97	26	2.0	1.6