



LIFTING TOOLS HYDRAULIC CYLINDERS



Low Height Telescopic Cylinders

Working pressure: 700bar



Very low retracted height
Long lifting stroke

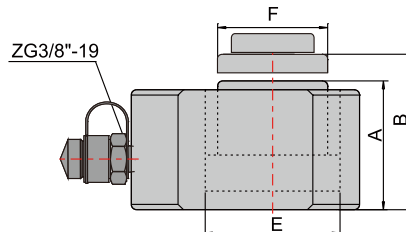
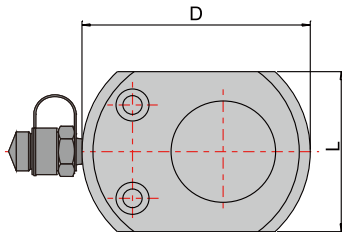
Characteristics:

- For use in confined spaces: machinery positioning, tool fastening, etc.
- Single acting, load return.
- High strength alloy steel for durability.
- Baked enamel finish for increased corrosion resistance
- Cylinder bores are roller burnished to harden the surface and make it smoother.
- Grooved piston rods require no saddle.
- Mounting holes permit easy fixturing.
- Each cylinder has an HH-II R2 3/8 male half coupler and dust cap.



Model	Cylinder Capacity @700 bar			Stroke (mm)	Total stroke (mm)
	Ton	stage number	KN		
HHYG-10D	10	2	49	15	25
		1	111	10	
HHYG-20D	20	2	67	16	27
		1	198	11	
HHYG-30D	30	3	50	20	54
		1	309	12	
HHYG-50D	50	3	50	25	66
		2	137	26	
HHYG-100D	100	1	496	15	69
		3	111	24	
		2	309	30	
		1	1002	15	





Effective area (cm ²)	Oil capacity (cm ³)	Closed height A (mm)	Extended Height B (mm)	Outside Dia. DxL (mm)	Inside Dia. E (mm)	Piston Rod Dia. F (mm)	G.W. (Kg)	Recommended pump	Model
7 15.9	30	49	74	83×60	30 45	26 38	1.6	HHB-700C	HHYG-10D
9.6 28.3	51	57	84	99×76	35 60	31 50	2.7		HHYG-20D
7.1 19.6 44.2	123	64	118	123×98	30 50 75	26 46 64	4.7		HHYG-30D
7.1 19.6 70.8	188	74	140	148×120	30 50 95	26 46 70	7.9		HHYG-50D
15.9 44.2 143.1	418	93	162	188×160	45 75 135	38 69 100	16.9	HHB-700	HHYG-100D