



# LIFTING TOOLS HYDRAULIC CYLINDERS



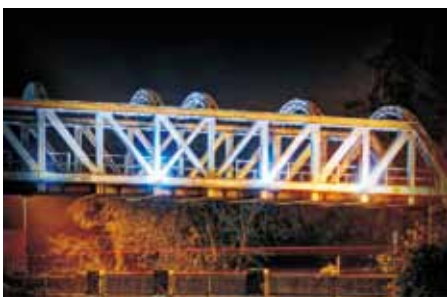
## Single-acting Low Height Cylinders

Working pressure : 700bar



### Characteristics:

- Compact, flat design for use in confined spaces.
- Single acting, spring return.
- High strength alloy steel for durability.
- Chrome plated piston resists wear and corrosion.
- Baked enamel finish for increased corrosion resistance
- Grooved piston rods require no saddle.
- Mounting holes permit easy fixturing.
- Cylinder bores are roller burnished to harden the surface and make it smoother.
- Each cylinder has an HH-II R2 3/8 male half coupler and dust cap.



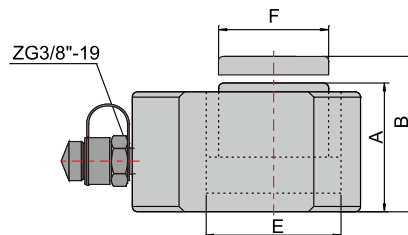
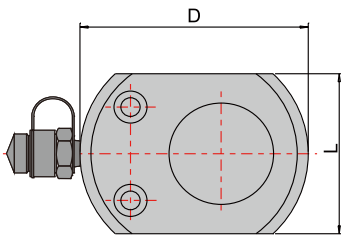
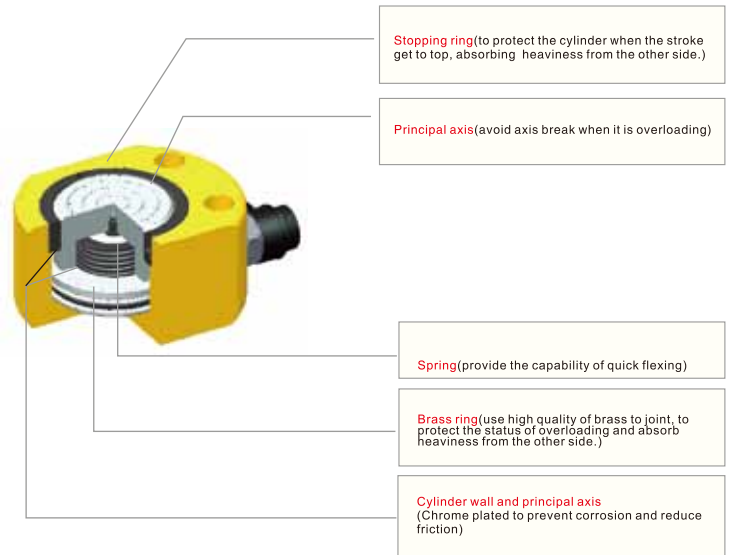
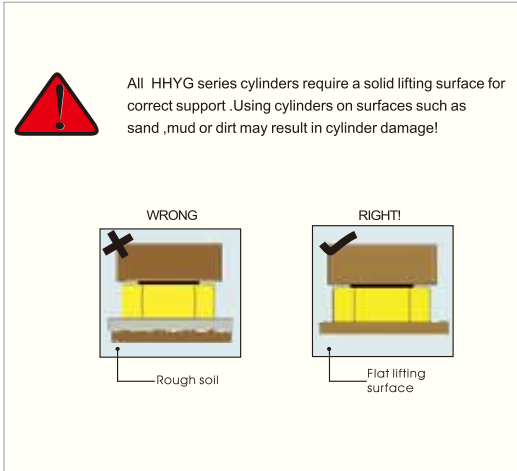
HHYG cylinders are able to lift a large steel structure in very limited space.



Only the low height HHYG cylinders are suitable for use in this confined space.

Model	Cylinder Capacity @700 bar		Stroke (mm)	Effective area (cm <sup>2</sup> )
	Ton	KN		
HHYG-5B	5	67	7	9.6
HHYG-10B	10	111	10	15.9
HHYG-20B	20	198	11	28.3
HHYG-30B	30	309	13	44.2
HHYG-50B	50	496	16	70.8
HHYG-100B	100	1002	16	143.1
HHYG-150B	150	1496	16	213.7
HHYG-200B	200	1984	20	283.4





Oil capacity (cm <sup>3</sup> )	Closed height A (mm)	Extended Height B (mm)	Outside Dia. DXL (mm)	Inside Dia. E (mm)	Piston Rod Dia. F (mm)	G.W. (Kg)	Recommended pump	Model
7	40	47	64×45	35	25	0.75	HHB-700C	HHYG-5B
16	48	58	83×60	45	38	1.6		HHYG-10B
34	56	67	99×76	60	50	2.7		HHYG-20B
55	62	75	123×98	75	64	4.6		HHYG-30B
101	72	88	148×120	95	70	7.8		HHYG-50B
200	91	107	188×160	135	100	16.8	HHB-700	HHYG-100B
342	100	116	215×190	165	115	27		HHYG-150B
567	110	130	255×244	190	135	42		HHYG-200B