



LIFTING TOOLS  
**HYDRAULIC  
 CYLINDERS**



**Double-acting, Hollow Plunger Cylinders**

Working pressure: 700bar



**For use in Testing,  
 Maintenance  
 and Tensioning  
 Applications**

**Characteristics:**

- Hollow plunger design allows for both push and pull forces.
- Double acting, hydraulic return.
- High strength alloy steel for durability.
- Baked enamel finish for increased corrosion resistance.
- Each cylinder has an HH-II R2 3/8 male half coupler and dust cap.

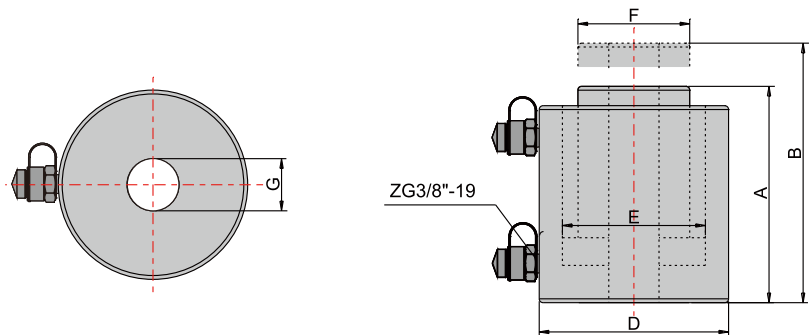


**Pump Selection**

A double-acting cylinder must be powered by a two-way hydraulic pump

Model	Cylinder Capacity @700 bar			Stroke (mm)	Effective area (cm <sup>2</sup> )		Oil capacity (cm <sup>3</sup> )	
	Ton	Enter trace (KN)	Return trace (KN)		Enter trace	Return trace	Enter trace	Return trace
HHYG-6050KS	60	562	377	50	80.3	53.8	402	269
HHYG-60100KS				100				
HHYG-10050KS	100	965	642	50	137.8	91.7	689	459
HHYG-100100KS				100				
HHYG-15050KS	150	1495	909	50	213.5	129.9	1118	650
HHYG-150100KS				100				
HHYG-20050KS	200	1929	1161	50	275.5	165.8	1436	829
HHYG-200100KS				100				





Closed height A (mm)	Extended Height B (mm)	Outside Dia. D (mm)	Centre hole G (mm)	Inside Dia. E (mm)	Piston Rod Dia. F (mm)	G.W. (Kg)	Handle	Recommended pump	Model
202	252	158	54	123	91	24.5	Removable carrying handles	HHB-700S	HHYG-6050KS
252	352					31.3			HHYG-60100KS
207	257	212	80	166	126	44.7			HHYG-10050KS
257	357					56.6			HHYG-100100KS
217	267	258	100	210	166	69.7		HHB-630B	HHYG-15050KS
267	367					87.2			HHYG-150100KS
237	287	288	120	240	191	90.9			HHYG-20050KS
287	387					112.0			HHYG-200100KS