



PIPE TOOLS

PIPE BENDERS

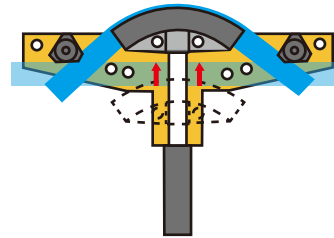


Manual Hydraulic Pipe Benders

The Manual Hydraulic Pipe Benders are designed for precision cold bending of thick-walled pipes (gas, water and steam pipes, non-heated black iron pipes, galvanized pipes, schedule 40 & 80) up to 90° following GB/T 3091, DIN 2440, EN 10255, BS1387 standards.

These benders are ideal for plumbing, sanitary and heating installation on construction sites, for apparatus and boiler making and for industrial applications.

one shot bending operation



Vented oil plug

Easy and simple operation

Fast piston return by turning the release knob anticlockwise.

High efficiency

Two-speed, heavy duty, low-maintenance hydraulic system

Precision bend forming

Quick detachable tripod stand provides

comfortable working position



Do not run the bender without insertion of a pipe between the bending shoe and pivot shoes.



See page 39 for detailed specification of bending formers.





HHW-2J, HHW-3J, HHW-4J



Characteristics:

- Capable of bending angles from 0° to 90° on pipes ranging from 1/2" to 4".
- Cold bending, no pre-warming of pipe is required.
- Works quicker with the two-speed, heavy-duty hydraulic pumping system.
- Comfortable working position with the tripod stand.
- Longer piston stroke per pumping and optimized hand force minimizes operator fatigue.
- Supplied in a wooden case with a set of bending shoes and service pack.

| Model | Hydraulic Ram Output (Ton) | Ram stroke (mm) | Bending range(O.D.) (mm) | Bending shoes (inch) | G.W. (Kg) | Packing size (cm) |
|--------|----------------------------|-----------------|--------------------------|-----------------------------------|-----------|-------------------|
| HHW-2J | 13 | 250 | Ø21.3-Ø60 | 1/2" 3/4" 1" 1¼" 1½" 2" | 48.2 | 73×32×20 |
| HHW-3J | 20 | 290 | Ø21.3-Ø88.5 | 1/2" 3/4" 1" 1¼" 1½" 2" 2½" 3" | 100.5 | 94×40×21 |
| HHW-4J | 20 | 370 | Ø21.3-Ø108 | 1/2" 3/4" 1" 1¼" 1½" 2" 2½" 3" 4" | 156.8 | 118×46×25 |

HHW-1, HHW-2, HHW-3, HHW-4



Characteristics:

- Capable of bending angles from 0° to 90° on pipes ranging from 1/2" to 4".
- Cold bending, no pre-warming of pipe is required.
- Works quicker with the two-speed, heavy-duty hydraulic pumping system.
- Longer piston stroke per pumping and optimized hand force minimizes operator fatigue.
- Heavy duty casters provide mobility on jobsites.
- Supplied in a wooden case with a set of bending shoes and service pack.

| Model | Hydraulic Ram Output (Ton) | Ram stroke (mm) | Bending range(O.D.) (mm) | Bending shoes (inch) | G.W. (Kg) | Packing size (cm) |
|-------|----------------------------|-----------------|--------------------------|-----------------------------------|-----------|-------------------|
| HHW-1 | 6 | 150 | Ø13-Ø33 | 1/4" 5/16" 3/8" 1/2" 3/4" 1" | 19 | 50×25×15 |
| HHW-2 | 13 | 250 | Ø21.3-Ø60 | 1/2" 3/4" 1" 1¼" 1½" 2" | 53 | 73×32×20 |
| HHW-3 | 20 | 290 | Ø21.3-Ø88.5 | 1/2" 3/4" 1" 1¼" 1½" 2" 2½" 3" | 117 | 93×40×21 |
| HHW-4 | 20 | 370 | Ø21.3-Ø108 | 1/2" 3/4" 1" 1¼" 1½" 2" 2½" 3" 4" | 155 | 118×46×25 |

HHW-1A



Characteristics:

- Capable of bending angles from 0° to 90° on pipes ranging from 3/8" to 1".
- Cold bending, no pre-warming of pipe is required.
- Fast and easy setup on the jobsite.
- Simple to use.
- Steel storage box for easy carry from site to site.

| Model | Hydraulic Ram Output (Ton) | Ram stroke (mm) | Bending range(O.D.) (mm) | Bending shoes (inch) | G.W. (Kg) | Packing size (cm) |
|--------|----------------------------|-----------------|--------------------------|----------------------|-----------|-------------------|
| HHW-1A | 6 | 150 | Ø16-Ø33 | 3/8" 1/2" 3/4" 1" | 17 | 43×38×13 |

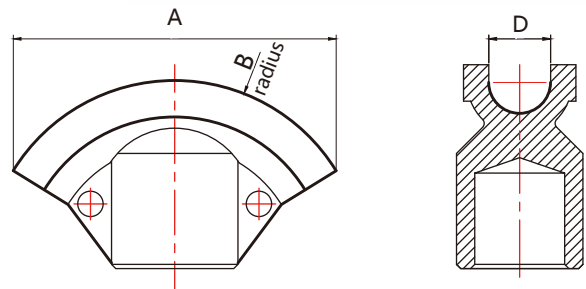
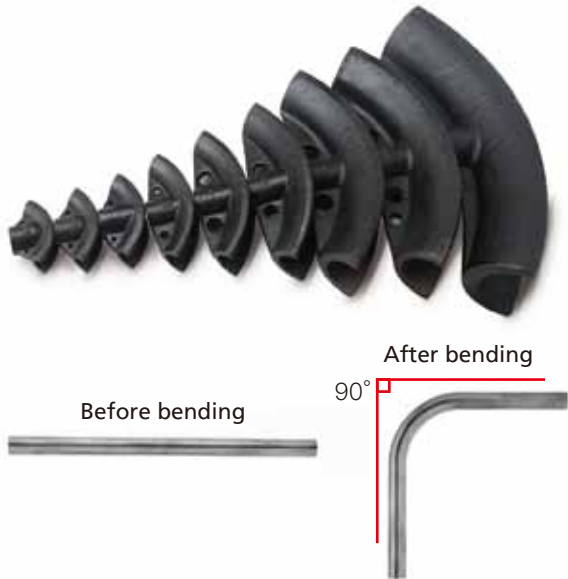


PIPE TOOLS PIPE BENDERS



Bending Shoes

For bending pipes to 90° following GB/T 3091, DIN 2440, EN 10255, BS1387 standards.
Made of nodular cast iron, the bending shoes are strong and durable.



| Bending shoe size (inch) | A (mm) | B (mm) | Minimum bend radius (mm) | D (mm) | Pipe Schedule | Wall thickness (mm) |
|--------------------------|--------|--------|--------------------------|--------|---------------|---------------------|
| 1/4" | 61 | 44 | 38 | 13.5 | 40 | 2 |
| 5/16" | 76 | 56 | 48 | 16.5 | 40 | 2 |
| 3/8" | 106 | 63 | 50 | 18 | 40 | 2.3 |
| 1/2" | 115 | 67.5 | 50.2 | 22 | 40 80 | 2.8 3.7 |
| 3/4" | 131 | 84.5 | 66 | 28 | 40 80 | 2.9 3.9 |
| 1" | 147 | 96.5 | 75.4 | 34 | 40 80 | 3.4 4.5 |
| 1 1/4" | 195 | 134 | 108.7 | 43 | 40 | 3.6 |
| 1 1/2" | 242 | 162 | 133.5 | 50 | 40 | 3.7 |
| 2" | 297 | 238 | 199.2 | 62 | 40 | 3.9 |
| 2 1/2" | 380 | 257 | 209 | 79 | 40 | 5.2 |
| 3" | 436 | 390 | 335 | 90 | 40 | 5.5 |
| 4" | 555 | 450 | 400 | 110 | 40 | 6 |

• Pipe schedule : 40 = Standard, 80= Extra Heavy

HHW-1A, Specifications of bending shoes

| Bending shoe size (inch) | A (mm) | B (mm) | Minimum bend radius (mm) | D (mm) | Pipe Schedule | Wall thickness (mm) |
|--------------------------|--------|--------|--------------------------|--------|---------------|---------------------|
| 3/8" | 104 | 63.5 | 50 | 18 | 40 | 2.3 |
| 1/2" | 112 | 68.5 | 54.8 | 21.5 | 40 | 2.8 |
| 3/4" | 131 | 87.5 | 68.5 | 28 | 40 | 2.9 |
| 1" | 147 | 107 | 86 | 34 | 40 | 3.4 |

• Pipe schedule : 40 = Standard

