



PIPE TOOLS PIPE BENDERS



Electric Hydraulic Pipe Benders

Model: HHW-2E

Characteristics:

The Manual Hydraulic Pipe Benders are designed for precision cold bending of thick-walled pipes (gas, water and steam pipes, non-heated black iron pipes, galvanized pipes, schedule 40 & 80) up to 900 following GB/T 3091, DIN 2440, EN 10255, BS1387 standards.

These benders are ideal for plumbing, sanitary and heating installation on construction sites, for apparatus and boiler making and for industrial applications.

Characteristics:

- Capable of bending angles from 0° to 90° on pipes ranging from 1/2" to 4".
- Cold bending, no pre-warming of pipe is required.
- Effective work with the electric pump.
- Carry handle and casters ensure quick and easy move from site to site.
- All components supplied in a wooden case, including electric pump, the bender, bending shoes and service pack.

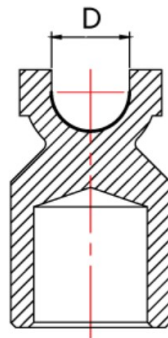
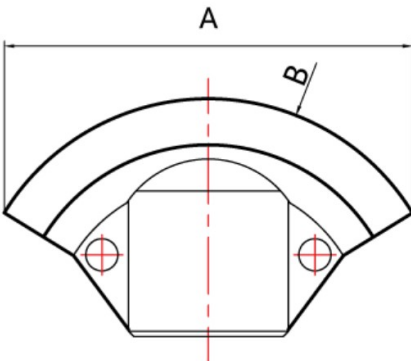
Parameters:

Model	Hydraulic Ram Output (Ton)	Ram stroke (mm)	Bending range(O.D.) (mm)	Bending shoes (inch)	G.W. (Kg)	Packing size (cm)
HHW-2E	13	250	Ø21.3-Ø60	1/2" 3/4" 1" 1 1/4" 1 1/2" 2"	66.9	96 × 35 × 28

For bending pipes to 900 following GB/T 3091, DIN 2440, EN 10255, BS1387 standards.

Made of nodular cast iron, the bending shoes are strong and durable.





Bending shoe size (inch)	A (mm)	B (mm)	Minimum bend radius (mm)	D (mm)	Pipe Schedule	Wall thickness (mm)
1/4"	61	44	38	13.5	40	2
5/16"	76	56	48	16.5	40	2
3/8"	106	63	50	18	40	2.3
1/2"	115	67.5	50.2	22	40	2.8
					80	3.7
3/4"	131	84.5	66	28	40	2.9
					80	3.9
1"	147	96.5	75.4	34	40	3.4
					80	4.5
1 1/4"	195	134	108.7	43	40	3.6
1 1/2"	242	162	133.5	50	40	3.7
2"	297	238	199.2	62	40	3.9
2 1/2"	380	257	209	79	40	5.2
3"	436	390	335	90	40	5.5
4"	555	450	400	110	40	6

• Pipe schedule : 40 = Standard, 80= Extra Heavy