

ELECTRIC HYDRAULIC PUNCHER

HYDRAULIC PUNCHER CHARACTERISTIC

● Handhold Hydraulic Puncher



Long use life
Forging technology makes work-head stable
Lighter weight
Aviation aluminum pump body
Low failure rate
Electric motor has insulation structure

Brushless Hydraulic Puncher ●

High speed
Strong output
Larger pump
Forging technology makes work-head stable

Brushless electric motor
Low noise
Long use life



● Electric Handhold Hydraulic Puncher

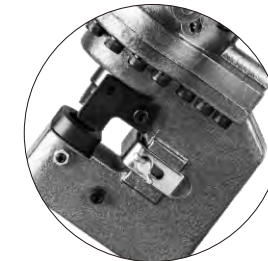
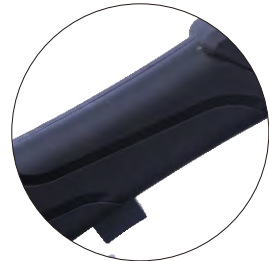
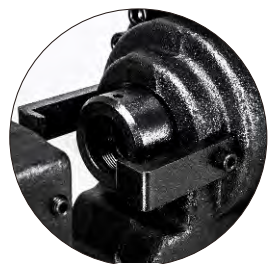


Li-ion battery has strong electric power storage
Safety switch design
Can be applied to any place without external power.

▼ Handhold Hydraulic Puncher

Portable electric hydraulic puncher is used for punching steel, iron, copper, aluminum, formed steel, U-steel, I-steel and so on. Small size, light weight, easy to operate, save effort and punch fast, the mould can be customized.

The second generation of portable punching machine uses brushless motor technology and space aluminum material. It has lighter weight, less noise, faster speed and longer life.



MHP Portable Hydraulic Punching Machine

NMHP Brushless Hydraulic Punching Machine

Electric Hydraulic Punching Machine

Model	MHP-20L	MHP-25	MHP-32	NMHP-22	NMHP-25	NMHP-32	MHP 20B
Voltage	220 V	220 V	220 V	220	220 V	220 V	DC18 V Li-ion battery
Wattge	1150 W	2000 W	3000 W	1500 W	1500 W	2000-2200 W	4.0 Ah
Standard punching dies	<u>6.5/9/13/17/20.5 mm</u>	<u>11 /13/17/21.5/25.5 mm</u>	<u>17/20.5/26/28/30.5 mm</u>	<u>6.5/9/13/17/21.5 mm</u>	<u>11/13/17/21.5/25.5 mm</u>	<u>17/21.5/25.5/28/30.5 mm</u>	<u>6.5/9/13/17/20.5 mm</u>
Max round hole dia.	20 mm	25.5 mm	30.5 mm	21.5 mm	25.5 mm	30.5 mm	20 mm
Punch Thickness	Steel Plate 6 mm Aluminium Plate 10mm	Steel Plate 10 mm Aluminium Plate 15mm	Steel plate12 mm Aluminium plate 20 mm	6 mm	10 mm	12 mm	6 mm
Throat Depth	35 mm	80 mm	60 mm	60mm	60mm	60mm	35 mm
Punch Speed	2-3 s	4 s	4-6 s	5 s	5 s	5-6s	5-8 s
Carton Dimension	530 × 165 × 315 mm	620 × 340 × 150 mm	620 × 245 × 460 mm	560 × 200 × 300 mm	580 × 340 × 235 mm	580 × 340 × 235 mm	400 × 195 × 270 mm
Unit Weight	14.6 kg	24.5 kg	34 kg	15.5 kg	18.2 kg	18.5 kg	11 kg
Packing Weight	18 kg	27 kg	48 kg	24.5 kg	27.2 kg	27.5 kg	21.5 kg